



# Buyers Guide Handbook

---





## > ABOUT US

**Mesh & Bar Pty Ltd** is one of Australia's leading independent manufacturer of reinforcing steel & mesh products. Since being established in 1998, the business has enjoyed significant growth throughout eastern Australia, which includes major offices in Sydney, Melbourne and Brisbane and regional branches in Newcastle, Wollongong, Ballarat, Rockhampton and Coolum.

At **Mesh & Bar** we believe our success comes from the success of our clients. We take great pride in not only meeting the expectations of our customers but continually exceeding them.

Our experienced staff and their attention to detail ensures that we are able to deliver complex projects with a high degree of accuracy.

## > QUALITY AT OUR CORE

At **Mesh & Bar** we are committed to providing the highest quality products to our customers. Our steel products are ACRS certified and manufactured in accordance to the AS/NZS 4671 Standard. Our internal management systems are based on the concept and commitment of continual improvement, as such we ensure that we consistently meet our accredited ISO9001 Standard.

## > BRANCHES

### **New South Wales**

- Sydney
- Newcastle
- Wollongong

### **Queensland**

- Brisbane
- Coolum Beach
- Rockhampton

### **Victoria**

- Melbourne
- Ballarat

*Contact details on Page 20.*



# Genesis

## Turrella, Sydney

---



Located 10km from the Sydney CBD is the **Genesis Development** by the **Tong Group**.

Encompassing 281 units across three buildings, this project offers elegant and modern living. **Mesh & Bar** have worked closely with the **Tong Group** to develop a responsive and flexible schedule that has ensured the on-time completion of the project.



# Westfield

## Sydney

---

In the heart of Australia's busiest CBD, surrounded by commuters, shoppers and tourists, **Mesh & Bar** managed to deliver over 2800 tonnes of reinforcing bar, mesh and accessories.

The dynamic nature of such a complex project required **Mesh & Bar** to work closely with **Westfield** to create a responsive and feasible solution that, above all stressed safety and precision. Despite the intricate challenges posed, **Mesh & Bar** successfully delivered this project on time and with minimum complications.



# Mater Private Hospital

## Springfield, Brisbane

The **Mater Private Hospital** is located at Springfield Central within the 'Health City'. A 52 hectare master planned health and wellness precinct designed by Springfield Land Corporation in collaboration with Harvard Medical International.

**Mesh & Bar** worked closely with **Watpac** to deliver a reinforcing solution for the construction of the 6 level, 10,000 sqm hospital. The **Mater Private Hospital** includes four operating theaters, an in-patient unit, a day surgery unit and Greater Springfields first cancer care centre.

# Fulton Lane

## Melbourne

The **Fulton Lane** construction project by the **Hickory Group** is a premium grade development that is composed of two residential apartment towers of 47 and 29 floors and podiums (a total of 730 apartments) sitting atop a vibrant retail component of 14,000 square metres.

**Mesh & Bar** have worked with the **Hickory Group** for many years supplying reinforcing solutions to many significant projects in Melbourne.

The **Fulton Lane** project provided a significant coordination challenge constructing two towers over a 9 story podium with two street frontages. The close work between the site team and **Mesh & Bar** has ensured this project proceeded well for both parties.





# 180 Brisbane

## Brisbane

---



**180 Brisbane** is a 34-storey office tower, located at 180 Ann Street. It was developed by Daisho Co Ltd, owner of the neighbouring 192 Ann Street building which, along with 180 Brisbane, was also constructed by **Watpac**.

The tower features 59,100 square metres of A-Grade commercial space, ground floor and podium retail and basement parking. **Mesh & Bar** was able to provide reinforcing steel products that complied with requirements of the Green Building Council of Australia to achieve a **6 Star Green Star** rating for the building. The building also received an A-Grade Property Council of Australia rating.

Designed by renowned architects Crone Partners, it also includes a huge artistic imprint of the Brisbane River on its façade, a 'green wall' and a public plaza to integrate the ground plane with the neighbouring building.

# RACV Cape Schanck Resort

## Mornington Peninsula

---



The **RACV Cape Schanck Resort** redevelopment is a \$150 million project on Victoria's Mornington Peninsula. **Kane Constructions** are the builders for one of the largest projects the Mornington Peninsula has seen. **Mesh & Bar** are working closely with **Eltrax**, the company charged with the responsibility of constructing a concrete structure that needs to be built with a high degree of sensitivity to the surrounding environment and residents of the area.

This major project is a striking example of curved walls and floor slabs, which has required **Mesh & Bar** to work very closely with **Eltrax** to deliver quality product on time to meet the demanding project requirements.





# Services

## Mesh Services

Alongside our range of Reinforcing Mesh products, we have the capacity to provide the additional service of supplying reinforcing mesh that has been cut and/or bent to meet the specific needs of any project.

All cutting and bending of reinforcing mesh is performed to Australian Standards and this service can assist you when working with difficult profiles of concrete slabs.

## Bar Services

In addition to the standard cutting and bending of reinforcing bar, **Mesh & Bar** can also provide the following services:

- **Prefabricated Cages**

Reinforcing Steel can be tack welded as required in its final fixed form to minimise work on site. Prefabricated cages can be provided for various works on site, including pier, pile and footing reinforcement.

- **Complex Bending**

Three dimensional bending and other complex reinforcement bending of anti-burst spirals, top hats, circular rings and radius bars are all additional services that **Mesh & Bar** can provide.

- **Saw Cutting**

Whilst most bars will generally only require standard cropping, our branches can provide an additional service of saw cutting bar.

## Estimating & Scheduling

**Mesh & Bar** can provide a full range of estimating and scheduling services. Should you require an estimate of the amount of reinforcement product required in your project, our expert staff will be able to prepare a take-off based on the information and drawings that you provide.

As part of our standard offer for all jobs, we can provide a fully detailed set of schedules to assist in both the processing of goods and the placement of material on site.

## Galvanising

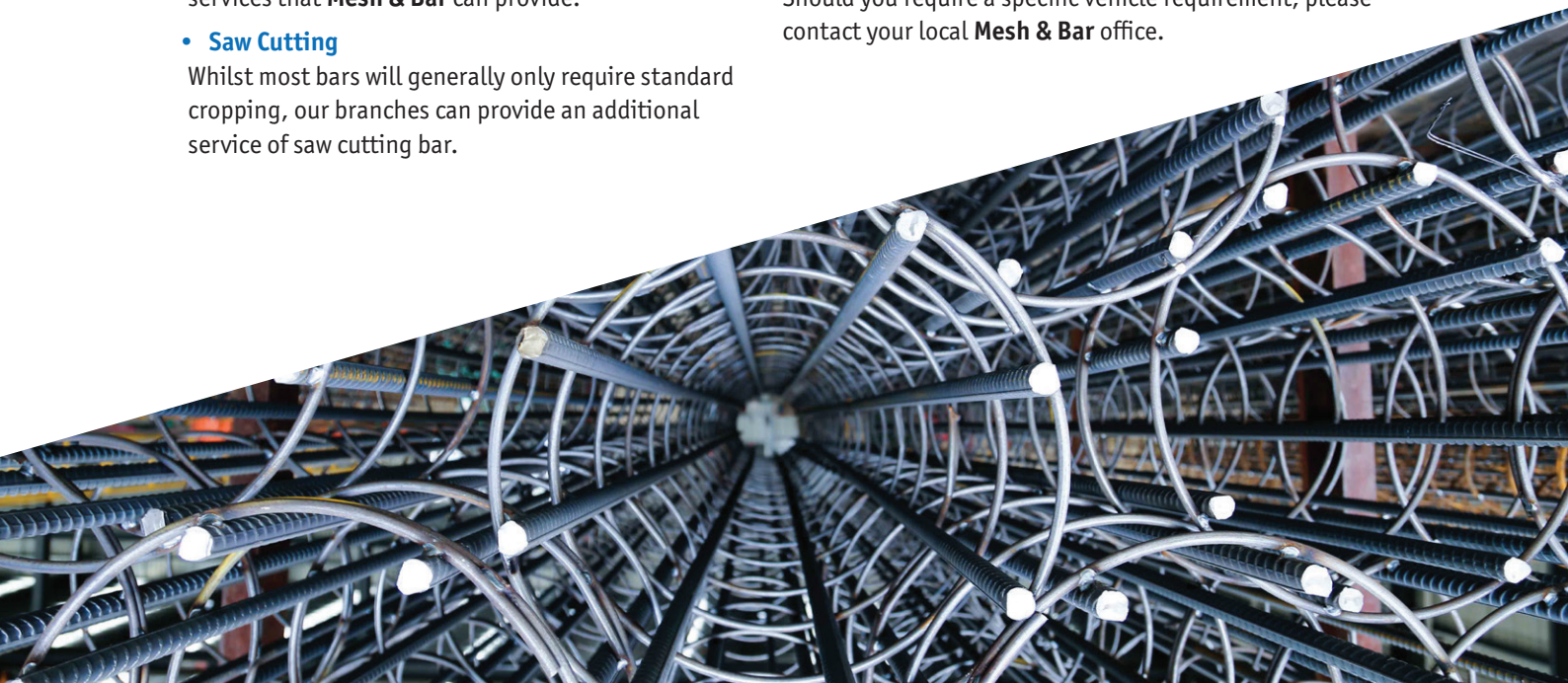
Should you require the Galvanising of part or all of the reinforcement contained in your project, **Mesh & Bar** can arrange for the necessary works to be performed.

**Mesh & Bar** only use Galvanisers that conform to the relevant Australian Standards to ensure that your work is completed to the highest standard.

## Delivery

We have a range of delivery options available to our customers. Our fleet consists of semi-trailers and a variety of rigid body tray trucks. Many of our trucks have fixed cranes to assist with the unloading of materials at your site.

Should you require a specific vehicle requirement, please contact your local **Mesh & Bar** office.





# Products

## Reinforcing Bar

**Mesh & Bar** use 500 MPa reinforcing bar and coil made from fully recycled material. Our 500 MPa bar comes in a range of bar diameters including 10mm\*, 12mm, 16mm, 20mm, 24mm, 28mm, 32mm and 36mm. All 500 MPa bar has a ribbed profile. Diameters over 36mm are available upon special order.

Smaller diameters are available in 250N or 250R MPa grade plain Round Bar and we also supply 250 MPa Pool Steel.

Our reinforcing bar comes in a variety of stock lengths - 6, 9, & 12 metres. We also have the capacity to cut and bend our reinforcement to address the specific requirements of your project.

### ➤ REINFORCING BARS 500N STOCK LENGTHS

SIZE (mm)	GRADE DESCRIPTION	STOCK LENGTH
N12	500N Deformed Bar	6M 9M & 12M
N16	500N Deformed Bar	6M 9M & 12M
N20	500N Deformed Bar	6M & 12M
N24	500N Deformed Bar	12M
N28	500N Deformed Bar	12M
N32	500N Deformed Bar	12M
N36	500N Deformed Bar	12M
N40	Available by special order only	

\* N10 is not available in stock lengths but can be cut to length as required

† Please be aware, some products attract lead time for delivery

### ➤ REINFORCING BARS 250N OR 250R STOCK LENGTHS

SIZE (mm)	GRADE DESCRIPTION	STOCK LENGTH
R6	250R Plain Round Bar	6M
R10	250R Plain Round Bar	6M
R12	250R Plain Round Bar	6M
R16	250R Plain Round Bar	6M
R20	250R Plain Round Bar	6M
R24	250R Plain Round Bar	6M
R28 & R33	Available by special order only	

### ➤ POOL STEEL 250S STOCK LENGTHS

SIZE (mm)	GRADE DESCRIPTION	STOCK LENGTH
S12	250S Deformed Pool Bar	6M & 9M

### ➤ REINFORCING BARS PROCESSING

Processed Steel includes scheduling, cutting, bending, tagging and bundling. Lead times apply for scheduled and processed steel.



## Reinforcing Mesh

**Mesh & Bar** manufactures a 500L steel ribbed reinforcing mesh suitable for use in a variety of applications including:

- Concrete footpaths
- Industrial and commercial ground slabs
- Precast Panel construction
- Residential slabs and footings

Standard reinforcing mesh sizes are 6.0m x 2.4m for the SL and RL range of products. The trench mesh products all come 6.0m in length; with a variety of standard widths from 200mm to 400mm.

### ➤ SQUARE MESH

Product Code	Standard Unit	Main Wire (mm)	Edge Wire (mm)	Cross Wire (mm)	Mass (kg)
<b>SL81</b>	Sheet	7.60@100	7.60@100	7.60@100	105
<b>SL102</b>	Sheet	9.50@200	6.75@100	9.50@200	80
<b>SL92</b>	Sheet	8.55@200	6.00@100	8.55@200	65
<b>SL82</b>	Sheet	7.60@200	5.38@100	7.60@200	52
<b>SL72</b>	Sheet	6.75@200	4.75@100	6.75@200	41
<b>SL62</b>	Sheet	6.00@200	4.75@100	6.00@200	33
<b>SL52</b>	Sheet	4.75@200	4.75@200	4.75@200	22



<sup>†</sup> Square Rib Mesh sheet size 6.0x2.4m (14.4 Square meters).

<sup>††</sup> Cut & Bent Mesh will incur additional charges

<sup>†††</sup> Please be aware, some products attract lead time for delivery.

### ➤ UTE MESH

Product Code	Standard Unit	Main Wire (mm)	Cross Wire (mm)	Mass (kg)
<b>SL62UTE</b>	Sheet	6.00@200	6.00@200	19
<b>SL72UTE</b>	Sheet	6.75@200	6.75@200	24
<b>SL82UTE</b>	Sheet	7.60@200	7.60@200	30

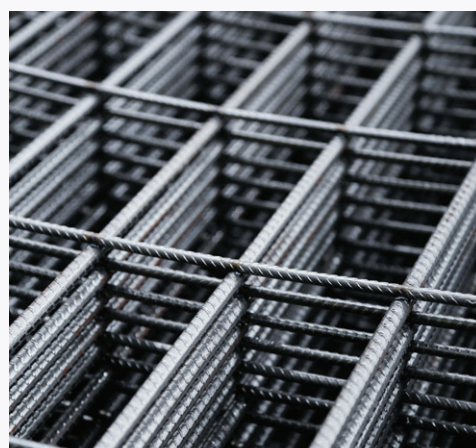
<sup>†</sup> Ute Rib Mesh is not available from all branches, please contact your local branch for further details.

<sup>††</sup> Ute Rib Mesh sheet size 4x2m (8 Square meters).

<sup>†††</sup> Please be aware, some product attract lead time for delivery.

## > RECTANGULAR MESH

Product Code	Standard Unit	Main Wire (mm)	Cross Wire (mm)	Mass (kg)
RL1218	Sheet	11.90@100	7.6@200	157
RL1118	Sheet	10.65@100	7.6@200	131
RL1018	Sheet	9.50@100	7.6@200	109
RL918	Sheet	8.55@100	7.6@200	93
RL818	Sheet	7.60@100	7.6@200	79
RL718	Sheet	6.75@100	7.6@200	68



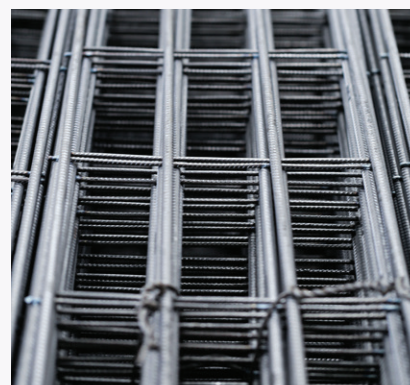
† Rectangular Rib Mesh sheet size 6.0x2.4m (14.4 Square meters).

†† Cut & Bent Mesh will incur additional charges.

††† Please be aware, some products attract lead time for delivery.

## > TRENCH MESH

Product Code	Main Wire (mm)	Cross Wire (mm)	Width (mm)	Length (mm)	Mass (kg)
L08TM3W	7.60@100	4.00@300	200	6000	7
L08TM4W	7.60@100	4.00@300	300	6000	9
L08TM5W	7.60@100	4.00@300	400	6000	12
L11TM3W	10.65@100	4.75@300	200	6000	13
L11TM4W	10.65@100	4.75@300	300	6000	18
L11TM5W	10.65@100	4.75@300	400	6000	22
L12TM3W	11.90@100	4.75@300	200	6000	16
L12TM4W	11.90@100	4.75@300	300	6000	22
L12TM5W	11.90@100	4.75@300	400	6000	27
L16TM3W	16.00@100	4.75@300	200	6000	31
L16TM4W	16.00@100	4.75@300	300	6000	41



† L16TM3W & L16TM4W are not available from all branches, please contact your local branch for further details

†† Please be aware some products attract lead time for delivery.



## Reinforcing Accessories



### ➤ METAL BAR CHAIRS - PLASTIC TIPPED

Product Code	Size (mm)	No. Per Bag
BC020	20	200
BC025	25	100
BC030	30	100
BC040	40	100
BC050	50	100
BC065	65	100
BC075	75	100
BC080	80	100
BC090	90	100
BC100	100	100
BC110	110	50
BC120	120	50
BC130	130	50
BC140	140	50
BC150	150	50
BC160	160	50
BC170	170	50
BC180	180	25
BC190	190	25
BC200	200	25
BC210	210	25
BC220	220	25
BC240	240	25
BC250	250	25
BC260	260	25
BC270	270	25
BC280	280	25
BC290	290	25
BC300	300	25
BC320	320	25
BC340	340	25

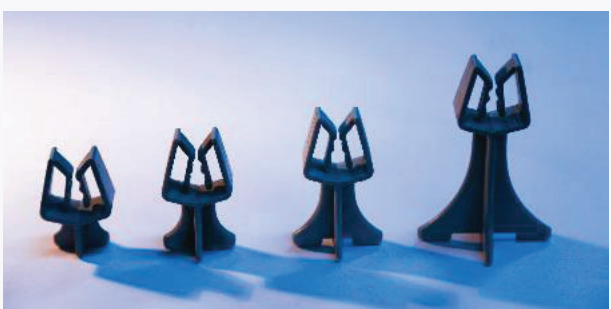
### ➤ METAL BASES

Product Code	Size (mm)	Chair Height (mm)	No. Per Bag
<b>BASES-S</b>	125 x 125	20-180	100
<b>BASES-L</b>	230 Diam	190-300	50



### ➤ PLASTIC DECK CHAIR

Product Code	Size (mm)	No. Per Bag
<b>BPDC1520</b>	15-20	100
<b>BPDC2530</b>	25-30	100
<b>BPDC3540</b>	35-40	100
<b>BPDC4550</b>	45-50	100
<b>BPDC6575</b>	65-75	50
<b>BPDC90100</b>	90-100	50
<b>BPDC110120</b>	110-120	50
<b>BPDC130140</b>	130-140	50
<b>BPDC150160</b>	150-160	50
<b>BPDC170180</b>	170-180	50
<b>BPDC190200</b>	190-200	50
<b>BC Base 130</b>	130	100



### ➤ CLIP FAST PLASTIC BAR CHAIRS

Product Code	Size (mm)	No. Per Bag
<b>B20</b>	20	100
<b>B25</b>	25	100
<b>B32</b>	30	100
<b>B40</b>	40	100
<b>B50</b>	50	100
<b>B65</b>	65	100
<b>B75</b>	75	100





### ➤ CLIP FAST PLASTIC MESH CHAIRS

Product Code	Size (mm)	No. Per Bag
M20	20	100
M25	25	100
M32	30	100
M40	40	100
M50	50	100
M65	65	100
M75	75	100

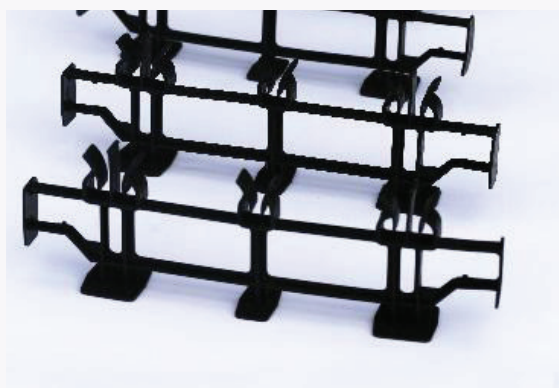


### ➤ PLASTIC CHAIR WITH BASE

Product Code	Size (mm)	No. Per Bag
PBCB2540	25-40	100
PBCB5065C	50-65	100
PBCB7590	75-90	100
PBCB85100	85-100	100
BSOG100C	100	100
BSOG110C	110	100
BSOG120C	120	100
BSOG130C	130	100
BSOG140C	140	100
BSOG150C	150	100


**➤ PLASTIC FASTWHEELS**

Product Code	Size (mm)	Bar Size	No. Per Bag
FASTWH20	20	8 - 12	100
FASTWH25	25	8 - 12	100
FASTWH30	30	8 - 12	100
FASTWH40	40	8 - 12	100
FASTWH50	50	8 - 12	100
FASTWH65	65	8 - 12	100
FASTWH75	75	8 - 12	100


**➤ TRENCH MESH SUPPORTS**

Product Code	Size (mm)	Mesh Size	No. Per Bag
TMS	65	8 - 12	25


**➤ BAR GUARDS**

Product Code	Bar Size (mm)	No. Per Bag
BG1236	12 to 36	100





### ➤ DOWEL CAPS

Product Code	Bar Size (mm)	No. Per Bag
DC	16 to 20	100



### ➤ BAG TIES

Product Code	Description	Qty
CBT110	110mm Wire Ties	2000
CBT125	125mm Wire Ties	2000
CBT150	150mm Wire Ties	2000
CBT200	200mm Wire Ties	2000



### ➤ TIE WIRE ROLLS

Product Code	Description	Size (mm)
CT-BP	1.5kg Belt Pack (coil) Black	1.57
CT-BPGAL	1.5kg Belt Pack (coil) Galvanised	1.57

## Building Products



### ➤ FLEXIBLE ROLL

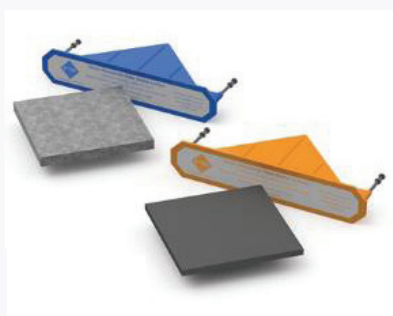
Product Code	Thickness (mm)	Width (mm)	Length per Roll (m)
FJR075	10	75	25
FJR75SB	10	75	25
FJR100	10	100	25
FJR100SB	10	100	25
FJR125	10	125	25
FJR125SB	10	125	25
FJR150	10	150	25
FJR150SB	10	150	25
FJR200	10	200	25
FJR200SB	10	200	25



### ➤ DOWEL BARS - BLACK OR GALVANISED

Product Code	Bar Diameter (mm)	Length (mm)	Finish
DWB16F450	16	450	Black
DWB16F600	16	600	Black
DWB20F450	20	450	Black
DWB20F600	20	600	Black
DWG16F450	16	450	Galvanised
DWG16F600	16	600	Galvanised
DWG20F450	20	450	Galvanised

<sup>†</sup> Other sizes available upon request



### ➤ DIAMOND DOWELS

Product Code	Size (mm)	Pack Size
DDDBlack06	110 x 110 x 6	25
DDDBlack10	110 x 110 x 10	15

<sup>†</sup> This product is also available galvanized



### ➤ DANLEY CRADLES

Please Contact a member of sales team for details on this product.



### ➤ SPEED SLEEVES & NAILING PLATES

Product Code	Size (mm)	Pack Size
DSS1631	16mm x 310mm	100
DSS2031	20mm x 310mm	100
DSSNP16	16mm Nail Plate	100
DSSNP20	20mm Nail Plate	100

<sup>†</sup> Other sizes available upon request



### ➤ KEY JOINT AND CAPPING

Product Code	Nominal Height (mm)	Length (mm)
KJ1006	100	6000
KJ1506	150	6000
KJ2006	200	6000
KJCRSTD	Standard Removable	25m roll
KJCPRIP	Permanent Rip-A-Strip	25m roll

<sup>†</sup> Other sizes available upon request



### ➤ POLYFILM AND TAPE

Product Code	Description
PFB4X20	4m x 50m x 200 um Black
PFO4X20	4m x 50m x 200 um Orange

Product Code	Description
TG	P.V.C. Grey Tape – 30m x 48mm

## WeldMesh products

Please Note: The following products are readily available from Mesh & Bar offices, branches that do not hold these items can readily order them upon request.

### GENERAL PURPOSE MESH

#### ➤ GALVANISED WELDMESH - HANDY SHEETS

Product Code	Wire Diameter & Aperture Size (mm)	Sheet Size (mm)	Weight (Kg)
RP112G	2.50 x 25 x 25	1200 x 2000	8
RP223	3.15 x 50 x 50	1200 x 2000	7
RP224	4.00 x 50 x 50	1200 x 2000	10
RP234	4.00 x 50 x 75	1200 x 2000	9
RP334	4.00 x 75 x 75	1200 x 2000	7
RP444	4.00 x 100 x 100	1200 x 2000	6

#### ➤ GALVANISED WELDMESH - INDUSTRIAL SHEETS

Product Code	Wire Diameter & Aperture Size (mm)	Sheet Size (mm)	Weight (Kg)
RP211G	2.50 x 25 x 25	2400 x 3000	23
RP311G	3.15 x 25 x 25	2400 x 3000	36
RP322G	3.15 x 50 x 50	2400 x 3000	18
RP422G	4.00 x 50 x 50	2400 x 3000	29
RP423G	4.00 x 50 x 75	2400 x 3000	25
RP444G	4.00 x 100 x 100	2400 x 3000	15
RP5644G	5.60 x 100 x 100	2400 x 3000	29



### ➤ BLACK WELDMESH - INDUSTRIAL SHEETS

Product Code	Wire Diameter & Aperture Size (mm)	Sheet Size (mm)	Weight (Kg)
RP422B	4.00 x 50 x 50	2400 x 3000	29
RP423B	4.00 x 50 x 75	2400 x 3000	25
RP5644B	5.60 x 100 x 100	2400 x 3000	29

### ➤ GALVANISED FIELD GATES INFILLS

Product Code	Wire Diameter & Aperture Size (mm)	Sheet Size (mm)	Weight (Kg)
FGI-8G5	5.00 x 100 x 200	2400 x 1100	7
FGI-10G5	5.00 x 100 x 200	3000 x 1100	9
FGI-12G5	5.00 x 100 x 200	3600 x 1100	10
FGI-14G5	5.00 x 100 x 200	4200 x 1100	12
FGI-16G5	5.00 x 100 x 200	4800 x 1100	14

### ➤ GALVANISED SHEEPYARD MESH

Product Code	Wire Diameter & Aperture Size (mm)	Sheet Size (mm)	Weight (Kg)
SYM9-410G5	5.00 x 100 x 250	900 x 6000	14
SYM11-410G5	5.00 x 100 x 250	1100 x 6000	17

## Warehouse Locations

**Mesh & Bar** have a range of locations across Australia. Find your closest warehouse below:

### NSW

#### SYDNEY

15 Owen Street  
Glendenning NSW 2761

**Ph:** 02 9832 2000

**Fax:** 02 9832 2550

**Email:** salesnsw@meshbar.com.au

#### NEWCASTLE

15 Pipeclay Ave  
Thornton NSW 2322

**Ph:** 02 4914 7888

**Fax:** 02 4966 3673

**Email:** salesnsw@meshbar.com.au

#### WOLLONGONG

17 John Cleary Place  
Coniston NSW 2500

**Ph:** 02 4239 5500

**Fax:** 02 4239 5599

**Email:** salesnsw@meshbar.com.au

### QLD

#### BRISBANE

17 General MacArthur Place  
Redbank QLD 4301

**Ph:** 07 3436 2400

**Fax:** 07 3288 3955

**Email:** salesqld@meshbar.com.au

#### SUNSHINE COAST

41 Quanda Road  
Coolum Beach QLD 4573

**Ph:** 07 5455 2333

**Fax:** 07 5455 2399

**Email:** salesqld@meshbar.com.au

#### ROCKHAMPTON

9-11 Monier Road  
Parkhurst QLD 4702

**Ph:** 07 4920 0986

**Email:** salesqld@meshbar.com.au

### VIC

#### MELBOURNE

396 Mt Derrimut Road  
Derrimut VIC 3030

**Ph:** 03 8353 6500

**Fax:** 03 8353 6599

**Email:** salesvic@meshbar.com.au

#### BALLARAT

17 Stonepark Rd  
Delacombe Vic 3350

**Ph:** 03 5320 9600

**Fax:** 03 5320 9699

**Email:** salesvic@meshbar.com.au